

STELLFUCHS

*...the smart solution for your
façade insulation*



FRÖWIS

STELLFUCHS ... *your advantages*

- ✓ Compensates for any unevenness up to 70 mm
- ✓ Substrates need not be pre-treated
- ✓ No remove from old plasters, disposal costs are eliminated
- ✓ Up to 6 dB better soundproofing
- ✓ Can be installed from 0°C
- ✓ No ring or cushion effects
- ✓ Easier to assemble than a rail system

There is no such thing as impossible!

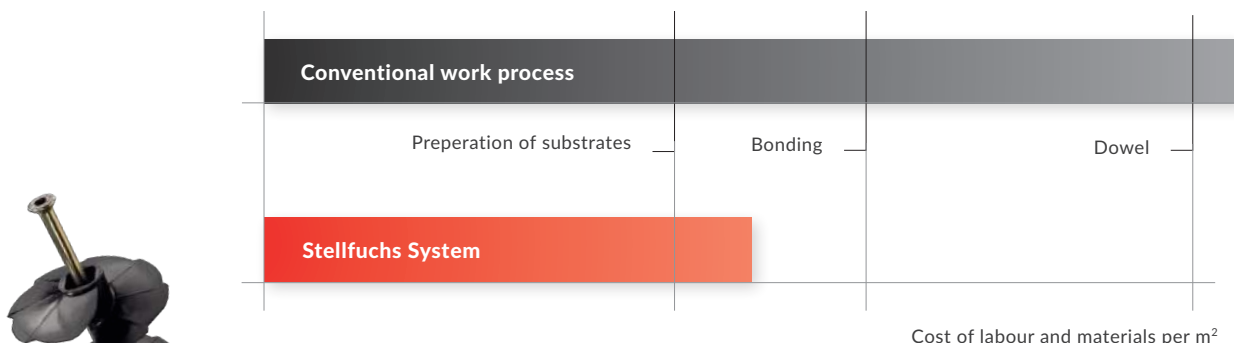
Friable plaster, plaster with imperfections, unevenness, salt efflorescence.

STELLFUCHS ...the smart solution

Do you still apply levelling plaster if the substrate is uneven? You can save yourself the effort. And what do you do when a cavity between the insulation and the substrate is required? The efficient and economical solution here is, Stellfuchs. With its double spiral and 10 mm screw it firmly and securely holds insulation materials to the façade without the requirement of adhesive. Spacing is individually adjustable up to 70 mm.

Halve your outlay and costs

Forget about arduous manual labour: you no longer need to remove dirty substrates or plaster. Time-intensive smoothing and bonding is also completely eliminated with the Stellfuchs system. Spare yourself the removal of 40 kg per m² of old plaster and save an average of 6 kg of construction adhesive at the same time. Previous labour costs are reduced by up to 50 % and projects can be completed much quicker.



Even with high loads

With the Stellfuchs a load class of 0.2 kN/m² is reached, as soon as the spacing between the insulation panel and the substrate is reduced from 70 mm to 60 mm.



Crucial is the total cost per m² and not the price per dowel.

Wolfgang Deckart, CEO
Wertschöpfer GmbH in Reutlingen.

STELLFUCHS ... *the strengths*



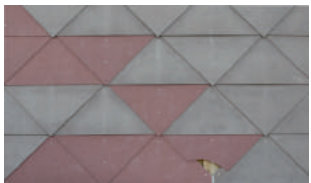
Substrates unsuitable for bonding

Don't waste any time or energy knocking off old substrates. With Stellfuchs, get started immediately as the removal of around 40 kg per m² of old plaster is unnecessary.



Protected heritage buildings

Even façades by protected heritage buildings can be effectively renovated: the clever Stellfuchs system meets the requirements of the Historic Monument Protection Office. Through insulation, structures and historic wall paintings are preserved.



Asbestos façades

How do you proceed after the asbestos has been removed? What seems complex, is quite simple: the substrate is not suitable for gluing. An ideal scope for the Stellfuchs system.



Panel constructions

Fitting the insulating façade and the new balconies is a real challenge when it comes to alignment. But not with the Stellfuchs.



New buildings

For new buildings, international insurance companies implement the Stellfuchs. Because it is the best solution for the specification requirements for ventilated cavities between insulation and substrate.



Timber frame construction

Don't lose your time or your patience with the likes of mixed substrates. Where conventional systems fall over, the strengths of the Stellfuchs system come into play.



If skewed should be straight, the Stellfuchs is the perfect choice.

Gerd Pommerenke, Head of Department
Projekt- und Baumanagement Heinrich Schmid GmbH & Co. KG in Hamburg.

STELLFUCHS ...the system

Four types of Stellfuchs System in two different spiral colours. In order to complete your project as cost-effectively as possible, the all-rounder Stellfuchs E100 steps up with additionally available products such as: Stellfuchs E1 for thinner panel and Stellfuchs B300 or B3 for concrete substrates.



Substrates:	A	B	C	D	E	A	B	C	D	E
Board thickness:	100 – 140 mm					100 – 200 mm				
Spacing possible up to:	30 mm					70 mm				
Type E1: A, B, C, D, E. Type B3: A.						Type E100: A, B, C, D, E. Type B300: A.				



The Stellfuchs is the best of all ETICS special solutions.

Andree Mostowski, CEO
Siebrecht Malereibetrieb GmbH in Bremen.

STELLFUCHS ... what you should know

Stellfuchs fastening system without the use of adhesives - does it work?

Yes, and particularly because the Stellfuchs gets by without the use of adhesives. Since its launch in 1999, the system has already proven itself a thousand times over, especially in wind and weather. Have you ever wondered why in the renovation of the façade every ETIC adhesive system needs to be additionally dowelled?

During insulation installation do problems arise in the form of an air passage?

No, quite the opposite. The air gap is filled floor by floor with a strip of mineral wool. Base rails, window frames, window sills and roof connections are also sealed with a strip of mineral wool. Thus giving a „permanent air layer“ between the insulation and substrate. Thermal bridges are reduced in the critical interfaces, and the eco-value improved in comparison to ETIC adhesive systems.

How many Stellfuchs dowels do I need per m²?

The required number depends on many factors. Rule of thumb it is considered to be a minimum of 4 Stellfuchs dowels/m² with EPS panels with a wind pressure of up to 0.77 kN/m² and a minimum number of 8 Stellfuchs dowels/m² for mineral wool panels. (See approval certificate Z-33.9.-453 Appendix 4).

Which insulation panels may be used?

EPS panels must be designed with tongue and groove. This saves up to 4 dowels per m². For mineral wool panels, the heat conduction group 040 is permissible.

Which type of Stellfuchs do I use when?

Use the **black Stellfuchs E100** insulation panels with thicknesses of 100 to 200 mm and maximum compensation for unevenness of up to 7cm/m. For concrete substrates, we recommend the type B300. The dowel has a lower anchorage depth and can therefore be installed more quickly.

The **green Stellfuchs E1** is suitable for compensating maximum unevenness of up to 3 cm/m and for panel thicknesses from 100 to 140 mm. Here you can also reduce the anchorage depth for concrete, saving time and money: the black Stellfuchs B3 is the most cost-effective choice.

**FRÖWIS AG, Gewerbeweg 1,
9486 Schaanwald, Liechtenstein.
P +423 384 2162
F +423 373 8009
office@froewis.com
www.froewis.com**

